

Notification from PCC that changes to the B4320 at the 'Valero' Junction are due to commence Monday 14th September

On Monday 7th September ACC received the following:

Junction Improvements at B4320 Angle Road

We are writing to inform you that the above scheme will commence on 14th September 2020. Please find attached plan for the location and proposal of the scheme. The works are programmed to take approximately 14 weeks to complete. The works will include realignment of the existing T-junction with associated carriageway construction, fencing, signage, drainage, utility diversion, roadmarkings and landscaping.

We are committed to complete the scheme within the shortest possible duration and ensure minimal disruption to the road network. However, the works may cause delay in journey time for the duration of the scheme. We apologise for any inconveniences.

Should you have any queries please do not hesitate to contact this office.

Yours sincerely,

Shafiul Alam

Peiriannydd (Priffyrdd)/Engineer (Highways)

Cygnor Sir Penfro/Pembrokeshire County Council

Neuadd y Sir/County Hall

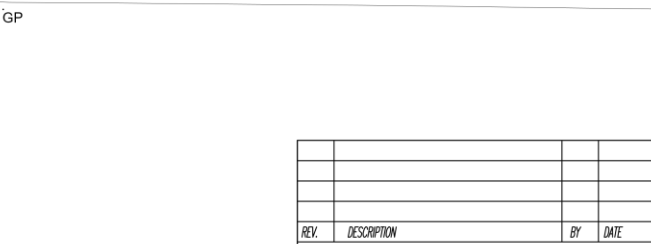
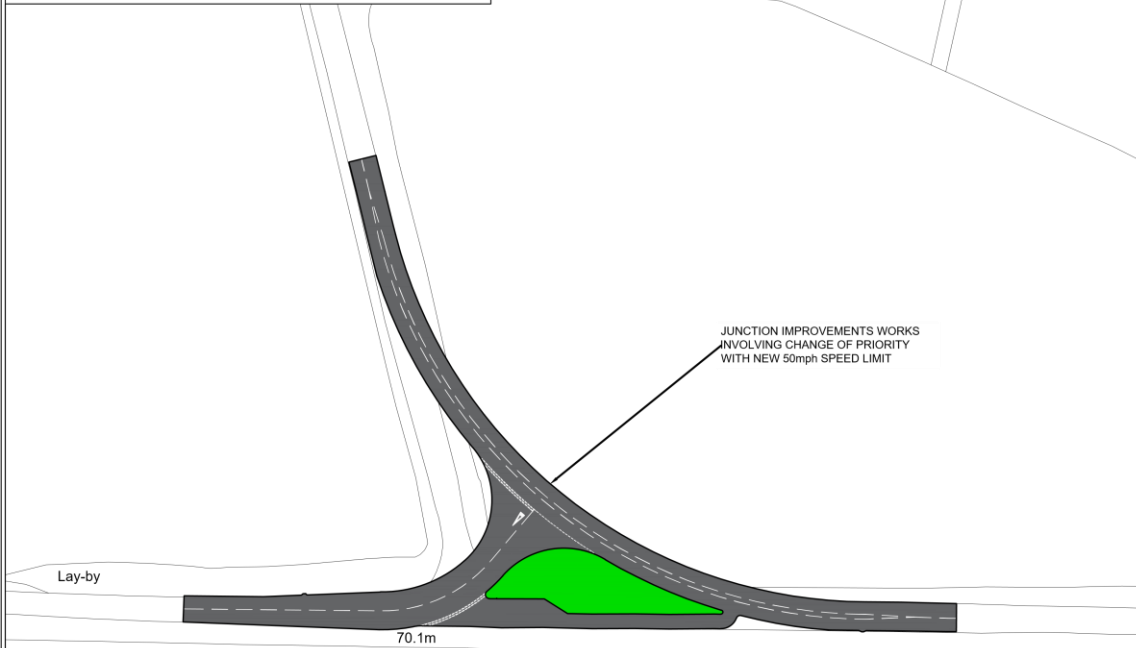
Hwlfordd/Haverfordwest

SA61 1TP

☎: 01437 775024

✉: shafiul.alam@pembrokeshire.gov.uk

A plan of the new road layout is set out on the next page.



REV.	DESCRIPTION	BY	DATE

EXTRACT FROM ORDNANCE SURVEY SM9200

© Haeffaint y Goron a hawlaï cronfa ddata 2015 Arlyog Ordnance Survey 100023344. Rhoddir trwydded datnyddiaeth, enghylfyrngedig a heb hysoddi (c) i weidy y data trwyddeddy at ddibenion anafnachol am y cyfnod y mae ar gael gan Gyngor Sir Penfro. Ni chwech argraffu, i-nyddio, ddiarhuu na gwerthu unrhyw ran o'r data hwn i drydydd partion mewn unrhyw ffur.

© Crown copyright and database rights 2015 Ordnance Survey 100023344. You are permitted to use this data solely to enable you to respond to, or interact with, the organisation that provided you with the data. You are not permitted to copy, sub-licence, distribute or sell any of this data to third parties in any form.



DRAWING TITLE

PROPOSED LAYOUT

DRAWN BY	SA	09/20	SCALE
CHECKED	AP	09/20	AS SHOWN @ A3



Darren Thomas MBA, B.Eng.(Hons), C.Eng, M.I.C.E, M.I.Struct.E

PROJECT TITLE			
JUNCTION IMPROVEMENTS AT B4320 ANGLE ROAD			
CAD REF.	DRAWING No. CA1857 R 101		
PROJECT PHASE	CONSTRUCTION	REV.	